

objektiv GmbH & Co. KG  
Büro- & Objektausstattung  
Bunsenstraße 20  
71032 Böblingen

Tel.: 07031/74 24 16-0  
Fax.: 07031/74 24 16-1  
URL: www.objektiv-gmbh.de  
E-Mail: post@objektiv-gmbh.de



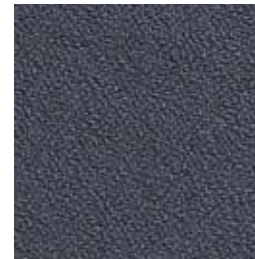
F 46 hellgrau



F 44 mittelgrau



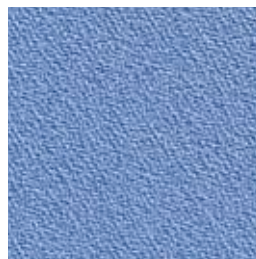
F 45 dunkelgrau



F 53 schiefergrau



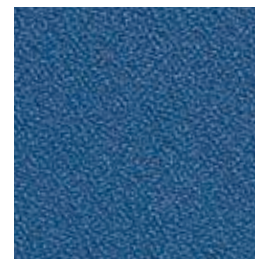
F 47 aqua



F 54 kornblume



F 43 blau



F 55 indigo



F 50 safran



F 56 pistazie



F 57 mohn



F 52 asphalt

Stoffgruppe · Fabric · Tissu · Tessuto



2013

Die Größe der abgebildeten Stoffstrukturen entspricht nicht immer dem Originalstoff. Farbabweichungen sind aus drucktechnischen Gründen möglich.

*The size of the materials structure shown does not always correspond to the original material. Due to the limitations of the printing process the materials and colours shown are not always a true copy of the original.*

La dimension des structures de matériau représentées ne correspond pas toujours au matériau d'origine. Pour des raisons techniques d'impression, des variations de teintes sont possibles.

**Technische Beschreibung**

|                         |                             |
|-------------------------|-----------------------------|
| Materialzusammensetzung | 100% Polyester              |
| Gewicht                 | ca. 335 g/lfm.              |
| Breite                  | 170 cm                      |
| Brandschutz             | DIN 4102 B1, entspricht den |
|                         | Normen in Deutschland       |
| Scheuerfestigkeit       | 30.000 Touren               |
|                         | nach Martindale             |
| Lichtechtheit           | 5-6                         |
| Reinigung               | Mit einem feuchten          |
|                         | Tuch abwischen.             |

**Technical Specifications**

|                         |                          |
|-------------------------|--------------------------|
| Composition             | 100% Polyester           |
| Weight                  | Approx. 335 g/lfm.       |
| Width                   | 170 cm                   |
| Flammability            | DIN 4102 B1              |
| Abrasion resistance     | 30.000 rubs according to |
|                         | Martindale               |
| Colourfastness to light | 5-6                      |
| Maintenance             | Wipe clean with          |
|                         | a damp cloth.            |



**Description technique**

|                       |                   |
|-----------------------|-------------------|
| Composition           | 100% Polyester    |
| Poids                 | ca. 335 g/lfm.    |
| Largeur               | 170 cm            |
| Classement feu        | M1                |
| Résistance à l'usure  | 30.000 mouvements |
|                       | selon Martindale  |
| Solidité à la lumière | 5-6               |
| Nettoyage             | Essuyez avec une  |
|                       | étouffe humide.   |

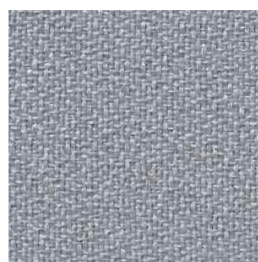
**Descrizione Technica**

|                                 |                         |
|---------------------------------|-------------------------|
| Composizione                    | 100% Polyestere         |
| Peso                            | ca. 335 g/lfm.          |
| Altezza                         | 170 cm                  |
| Resistenza al fuoco             | M1-DIN 4102 B1          |
| Resistenza all'abrasione        | 30.000 „sfregamenti“    |
|                                 | secondo Martindale      |
| Resistenza del colore alla luce | 5-6                     |
| Manutenzione                    | Pulire con panno umido. |

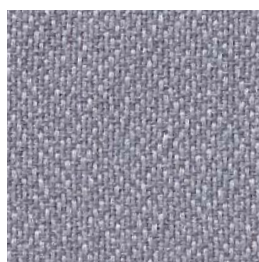
PREFORM GmbH  
 Esbacher Weg 15  
 D-91555 Feuchtwangen  
 Tel.: + 49 98 52 9070  
 Fax: + 49 98 52 907-77  
 info@preform.de  
 www.preform.de



A 52 silver



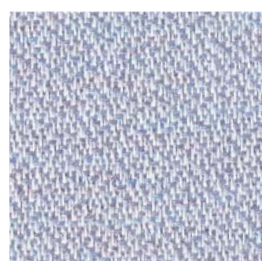
A 50 medium grey



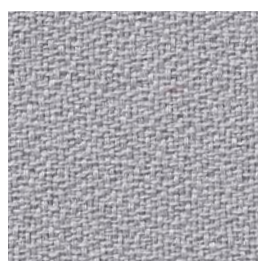
A 53 nickel



A 64 anthracite



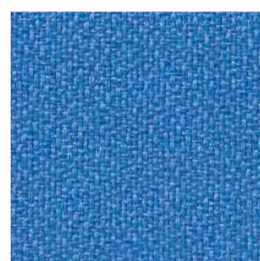
A 51 heather



A 98 stone



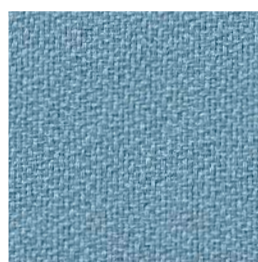
A 59 steel



A 70 cyan blue



A 68 sky



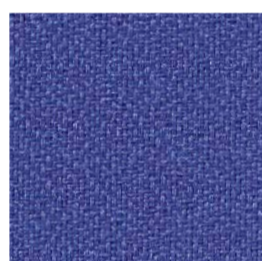
A 79 baltic sea



A 54 reseda



A 80 spring



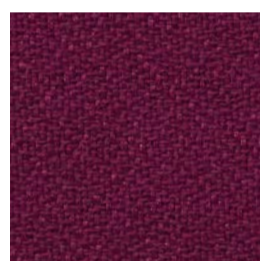
A 56 daylight blue



A 62 dark blue



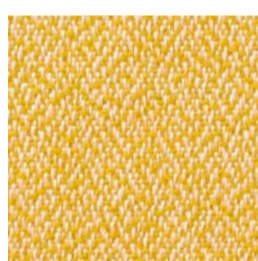
A 93 purple



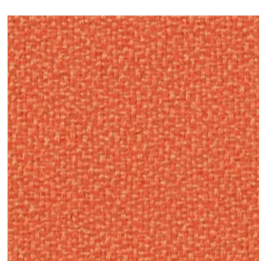
A 92 bordeaux



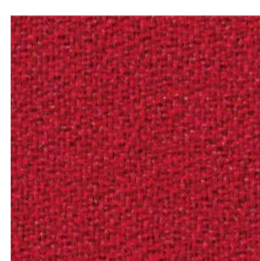
A 66 yellow



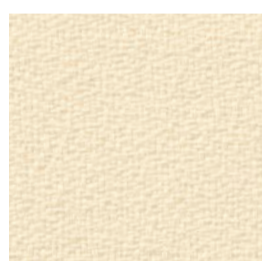
A 57 sunshine



A 73 orange



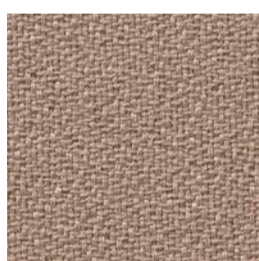
A 65 red



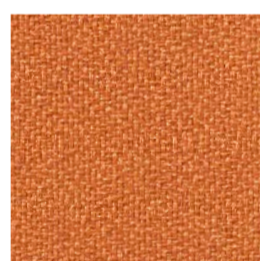
A 99 beach



A 100 grit



A 101 nougat



A 67 terracotta



A 112 white

**Technische Beschreibung**

Materialzusammensetzung 100 % Polyester Trevira CS  
 Gewicht ca. 400 g/lfm.  
 Breite 170 cm  
 Brandschutz DIN 4102 B1, entspricht den  
 Normen in Deutschland  
 Scheuerfestigkeit 20.000 Touren nach Martindale  
 Lichtechtheit 5 - 6  
 Reinigung Mit einem feuchten Tuch abwischen.

**Description technique**

Composition 100 % Polyester Trevira CS  
 Poids ca. 400 g/lfm.  
 Largeur 170 cm  
 Classement feu M1  
 Résistance à l'usure 20.000 mouvements  
 selon Martindale  
 Solidité à la lumière 5 - 6  
 Nettoyage Essuyez avec une étoffe humide.

**Technical Specifications**

Composition 100 % Polyester Trevira CS  
 Weight Approx. 400 g/lfm.  
 Width 170 cm  
 Flammability DIN 4102 B1  
 Abrasion resistance 20.000 rubs according  
 to Martindale  
 Colourfastness to light 5 - 6  
 Maintenance Wipe clean with a damp cloth.

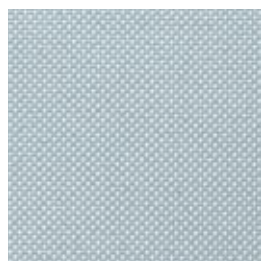
**Descrizione Tecnica**

Composizione 100 % Poliestere Trevira CS  
 Peso ca. 400 g/lfm.  
 Altezza 170 cm  
 Resistenza al fuoco M1-DIN 4102 B1  
 Resistenza all'abrasione oltre 20.000 "sfregamenti"  
 secondo Martindale  
 Resistenza del colore alla luce 5 - 6  
 Manutenzione Pulire con panno umido.

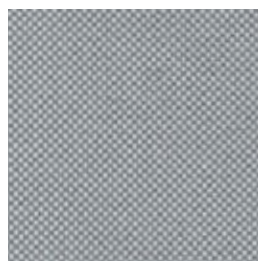
Die Größe der abgebildeten Stoffstrukturen entspricht nicht immer dem Originalstoff. Farbabweichungen sind aus drucktechnischen Gründen möglich.

*The size of the materials structure shown does not always correspond to the original material. Due to the limitations of the printing process the materials and colours shown are not always a true copy of the original.*

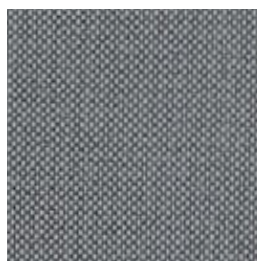
La dimension des structures de matériau représentées ne correspond pas toujours au matériau d'origine. Pour des raisons techniques d'impression, des variations de teintes sont possibles.



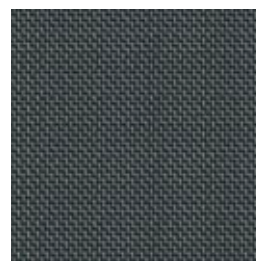
A 40 arctic



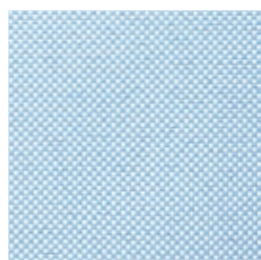
A 41 cloud



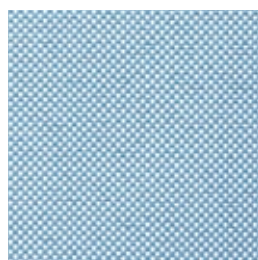
A 42 graphite



A 424 onyx



A 43 ice blue



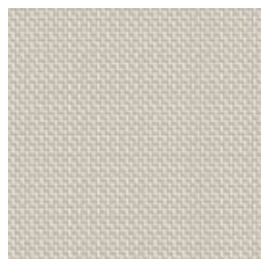
A 44 pacific



A 444 river



A 45 deep sea



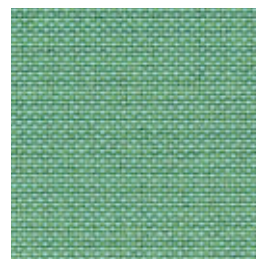
A 459 champagne



A 47 wheat



A 48 indian



A 46 jade

Stoffgruppe · Fabric · Tissu · Tessuto



LINIO

2012

Die Größe der abgebildeten Stoffstrukturen entspricht nicht immer dem Originalstoff. Farbabweichungen sind aus drucktechnischen Gründen möglich.

*The size of the materials structure shown does not always correspond to the original material.*

*Due to the limitations of the printing process the materials and colours shown are not always a true copy of the original.*

La dimension des structures de matériau représentées ne correspond pas toujours au matériau d'origine.

Pour des raisons techniques d'impression, des variations de teintes sont possibles.

**Technische Beschreibung**

|                         |   |
|-------------------------|---|
| Materialzusammensetzung | 100 % Polyester Trevira CS                        |
| Gewicht                 | ca. 400 g/lfm.                                    |
| Breite                  | 170 cm  |
| Brandschutz             | DIN 4102 B1, entspricht den Normen in Deutschland |
| Scheuerfestigkeit       | 20.000 Touren nach Martindale                     |
| Lichtechtheit           | 5 - 6   |
| Reinigung               | Mit einem feuchten Tuch abwischen.                |

**Technical Specifications**

|                         |                                     |
|-------------------------|-------------------------------------|
| Composition             | 100 % Polyester Trevira CS          |
| Weight                  | Approx. 400 g/lfm.                  |
| Width                   | 170 cm                              |
| Flammability            | DIN 4102 B1                         |
| Abrasion resistance     | 20.000 rubs according to Martindale |
| Colourfastness to light | 5 - 6                               |
| Maintenance             | Wipe clean with a damp cloth.       |

**Description technique**

|                       |                                    |
|-----------------------|------------------------------------|
| Composition           | 100 % Polyester Trevira CS         |
| Poids                 | ca. 400 g/lfm.                     |
| Largeur               | 170 cm                             |
| Classement feu        | M1                                 |
| Résistance à l'usure  | 20.000 mouvements selon Martindale |
| Solidité à la lumière | 5 - 6                              |
| Nettoyage             | Essuyez avec une étoffe humide.    |

**Descrizione Technica**

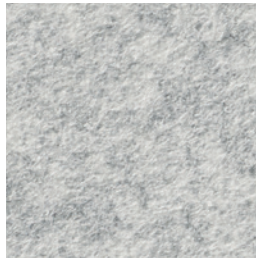
|                                 |   |
|---------------------------------|---|
| Composizione                    | 100 % Poliestere Trevira CS                   |
| Peso                            | ca. 400 g/lfm.                                |
| Altezza                         | 170 cm  |
| Resistenza al fuoco             | M1-DIN 4102 B1                                |
| Resistenza all'abrasione        | oltre 20.000 "sfregamenti" secondo Martindale |
| Resistenza del colore alla luce | 5 - 6   |
| Manutenzione                    | Pulire con panno umido.                       |



PREFORM GmbH  
 Esbacher Weg 15  
 D-91555 Feuchtwangen  
 Tel.: + 49 98 52 9070  
 Fax: + 49 98 52 907-77  
 info@preform.de  
 www.preform.de



A 260 dust



A 261 granite



A 262 camel



A 263 quartz



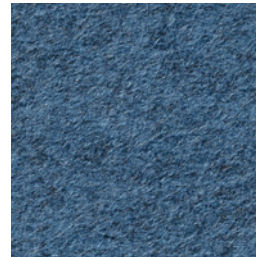
A 264 glacier



A 265 jeans



A 266 ink



A 267 night



A 268 avocado



A 269 jungle



A 270 tomato



A 271 fire



A 291 north sea



2018



Stoffgruppe · Fabric · Tissu

Die Größe der abgebildeten Stoffstrukturen entspricht nicht immer dem Originalstoff. Farbabweichungen sind aus drucktechnischen Gründen möglich.

*The size of the materials structure shown does not always correspond to the original material.*

*Due to the limitations of the printing process the materials and colours shown are not always a true copy of the original.*

La dimension des structures de matériau représentées ne correspond pas toujours au matériau d'origine.

Pour des raisons techniques d'impression, des variations de teintes sont possibles.



#### Technische Beschreibung

Materialzusammensetzung 70% Viskose / 30% Wolle  
Gewicht ca. 310 g/lfm.  
Breite 190 cm  
Brandschutz B1 DIN 4102  
Reinigung Mit einem feuchten  
Tuch abwischen.

#### Technical Specifications

Composition 70% Viscose / 30% Wool  
Weight Approx. 310 g/lfm.  
Width 190 cm  
Flammability B1 DIN 4102  
Maintenance Wipe clean with  
a damp cloth.

#### Description technique

Composition 70% Viscose / 30% Laine  
Poids ca. 310 g/lfm.  
Largeur 190 cm  
Classement feu B1 DIN 4102  
Nettoyage Essuyez avec une  
étouffe humide.

PREFORM GmbH  
Esbacher Weg 15  
D-91555 Feuchtwangen  
Tel.: + 49 98 52 9070  
Fax: + 49 98 52 907-77  
info@preform.de  
www.preform.de